

VDSL2 100M (Profile 30a) Ethernet Extender



Description

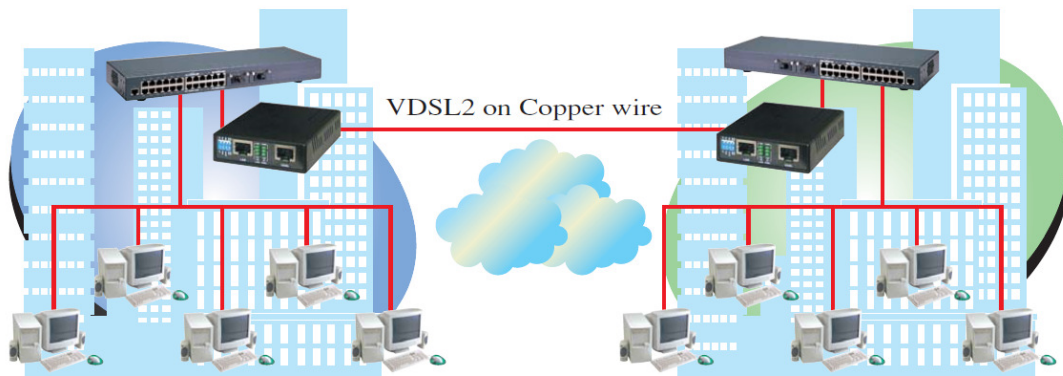
100M VDSL2 Ethernet Extender is a high-speed Ethernet Extender with one Ethernet port (RJ-45 connector) and one VDSL port (RJ-45 connector). It is a bridge mode modem, well accommodating VDSL2 (Very-high-data-rate Digital Subscriber Loop) technology to extend Ethernet service over single-pair phone line. It is compliant to ITU-T G.993.2 standard and supports VDSL2 30a profile that features 100Mbps of symmetric data rate over the existing copper wires. Supporting both symmetric and asymmetric transmission, it can reach up to 100/100 Mbps bandwidth (line rate) within 300M or 10/10 Mbps (line rate) for 1 Km long range connections. By providing ultra-high speed, Proscend VDSL2 100M Ethernet Extender makes your telephone line achieve its best performance than before. It has the advantage of minimum installation time (simply as plug-n-play) and minimum expense by allowing video streaming and data to share the same telephone pair without interference.

100M VDSL2 Ethernet Extender delivers everything needed to quickly deploy a high-speed IP-based network for providing high-speed Internet access, video-on demand services and voice services. The resulting compact, cost-effective form factor offers Systems Integrators, small business owners an attractive Long Reach Ethernet solution.

Features

- Cost effective bridge function to connect two Ethernet LAN
- Support flow control on Fast Ethernet port via PAUSE frame or Back Pressure
- IEEE 802.1Q VLAN tag transparent
- Easy installation via simple plug-and-play
- Selectable CPE and CO mode via DIP switch:
 - Two working modes are built in the same unit, which keep the flexibility of installation and easy provision of service but lower inventory of service provider
- Selectable VDSL2 profile mode (17a or 30a):
 - Support up to VDSL2 30a profile to ensure high data rate.
- Selectable target band plan:
 - Symmetric: Support the band plan G.997 and provide the symmetric transmission on both downstream and upstream.
 - Asymmetric: Provides highest line rate in short range in asymmetric mode.
- Selectable target SNR margin
- Compatible with Proscend 724M/708M DSLAM & third party DSLAM.





Specifications

- 4-position DIP Switch
 - Selectable CO or CPE mode
 - Selectable 30a or 17a (VDSL2 Profile)
 - Selectable Band plan (Symmetric or Asymmetric)
 - Selectable target SNR margin (6dB or 9dB)
- LAN Interface:
 - RJ-45 connector
 - Complying with IEEE 802.3/802.3u/802.3x
 - 10/100 Base-T Auto-Negotiation, Auto-MDI/MDI-X.
- LED:
 - LAN: ACT/LNK, 10/100Mbps, Half/Full Duplex
 - VDSL: Power On/Off, CO/CPE, Idle/Trained/Link
- VDSL Interface:
 - RJ-45 connector
 - DMT Encoding
 - Complying with ITU-T G993.1/993.2/G.997.1
 - On-board surge protection
- Power supply:
 - DC single 12 Volt over 3.5mm DC jack; 4.2 Watt maximum.
- Dimension: 73.4mm x 96.2mm x 22.8mm
- Temperature: 0°C ~45°C
- Humidity: 0%~95%RH (non-condensing)
- **Regulatory Compliance**
 - CE
 - FCC Part 15 Class B
 - EN60950

* Features and specifications are subject to change without notice

PROSCEND[®]
Proscend Communications Inc.